

5000 DOUBLE SLIDING TB



Transmittance

$U_w \geq 1.3$ (W/m²K)

Consult typology, dimensions and glass.

Acoustic insulation

Maximum glazing **18 mm**

Minimum glazing **4 mm**

Maximum acoustic insulation **Rw = 40 dB**

Sightlines

Frame 199 mm

Sash 28 mm

Profile Thickness

Door 1.25 mm

Polyamide strip length

16 - 24 mm

Maximum dimensions / Sash

Width (L) = 1,600 mm

Height (H) = 2,600 mm

Consult maximum weight and dimensions according to typologies.

Maximum weight / Sash

80 kg

Categories achieved at test centre

Protection against atmospheric agents.

Air permeability

(UNE-EN 12207): Class 3

Water tightness

(UNE-EN 12208): Class 8A

Wind resistance

(UNE-EN 12210): Class C5

* Reference test 1.25 x 1.50 m / 2 sashes

Test verified by

ALUMINIOS CORTIZO S.A.U.

Extrusion alloy

6063 T-5

Finishes

Colour powder coating (RAL, mottled & rough).

According to Qualicoat >60 microns

Wood effect powder coating.

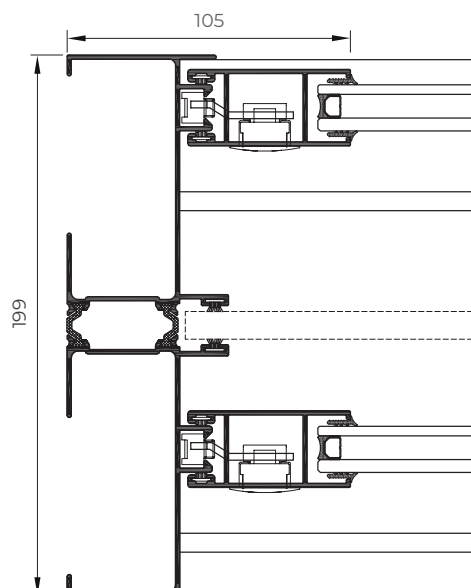
According to Qualideco standard

Anodised.

According to Ewva Euras / Standard Class 15 / Optionally Class 20 and 25

Opening possibilities

Sliding with 2, 3 & 4 sashes.



5000 SLIDING

**Transmittance** **$U_w \geq 2.3$ (W/m²K)**

Consult typology, dimensions and glass.

Acoustic insulation

Maximum glazing	18 mm
Minimum glazing	4 mm
Maximum acoustic insulation	Rw = 34 dB

Sightlines

		Profile Thickness	
Frame	73 mm	Door	1.5 mm
	121 mm (integral)		
Sash	28 mm		

Maximum dimensions / Sash

Width (L) = 1,600 mm

Height (H) = 2,600 mm

Consult maximum weight and dimensions according to typologies.

Maximum weight / Sash 80 kg**Categories achieved at test centre**

Protection against atmospheric agents.

Air permeability**(UNE-EN 12207): Class 3****Water tightness****(UNE-EN 12208): Class 8A****Wind resistance****(UNE-EN 12210): Class C5**

* Reference test 1.20 x 1.20 m / 2 sashes.

Test verified by

ALUMINIOS CORTIZO S.A.U.**Extrusion alloy**

6063 T-5

Finishes

Colour powder coating (RAL, mottled & rough).

According to Qualicoat >60 microns

Wood effect powder coating.

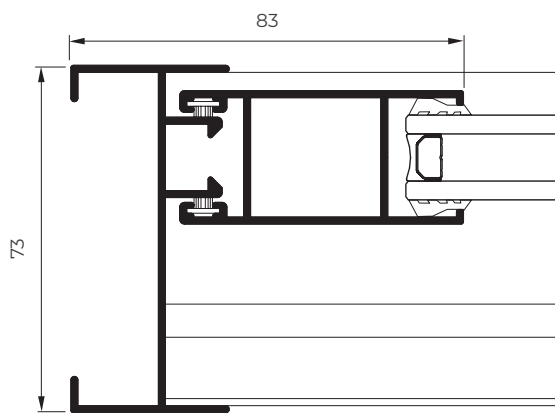
According to Qualideco standard

Anodised.

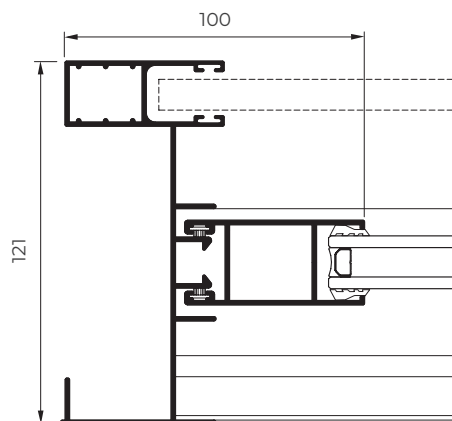
According to Ewwa Euras / Standard Class 15 / Optionally Class 20 and 25

Opening possibilities

Sliding with 2, 3 & 4 sashes.



5000 sliding



5000 integral sliding