

COR 70 OC TB

HALF HIDDEN SASH

Transmittance

$U_w \geq 0.9$ (W/m²K)

Consult typology, dimensions and glass.

Acoustic insulation

Maximum glazing **55 mm**

Minimum glazing **15 mm**

Maximum acoustic insulation **Rw = 44 dB**

Sightlines

Frame 70-232 mm

Sash 78 mm

Profile Thickness

Window 1.5 mm

Polyamide strip length

32-35 mm

Maximum dimensions / Sash

Width (L) = 1,000 mm

Height (H) = 1,700 mm

Consult maximum weight and dimensions according to typologies.

Maximum weight / Sash

160 kg

Certificates

DTA certification from CSTB lab.



Categories achieved at test centre

Protection against atmospheric agents.

Air permeability

(UNE-EN 12207): Class 4

Water tightness

(UNE-EN 12208): Class E1800

Wind resistance

(UNE-EN 12210): Class C5

* Reference test 1.23 x 1.48 m / 2 sashes.

Test verified by

ALUMINIOS CORTIZO S.A.U.

Extrusion alloy

6063 T-5

Finishes

Possibility of dual colour

Colour powder coating (RAL, mottled & rough)

According to Qualicoat >60 microns

Wood effect powder coating

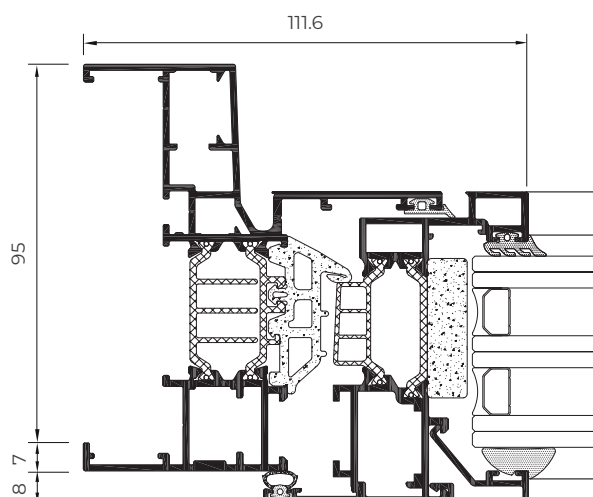
According to Qualideco standard

Anodised

According to Ewva Euras / Standard Class 15 / Optionally Class 20 and 25

Opening possibilities

Inward opening: 1 & 2 sash side hung, 1 & 2 sash tilt & turn, parallel sliding and bottom hung.



* Perimeter frame